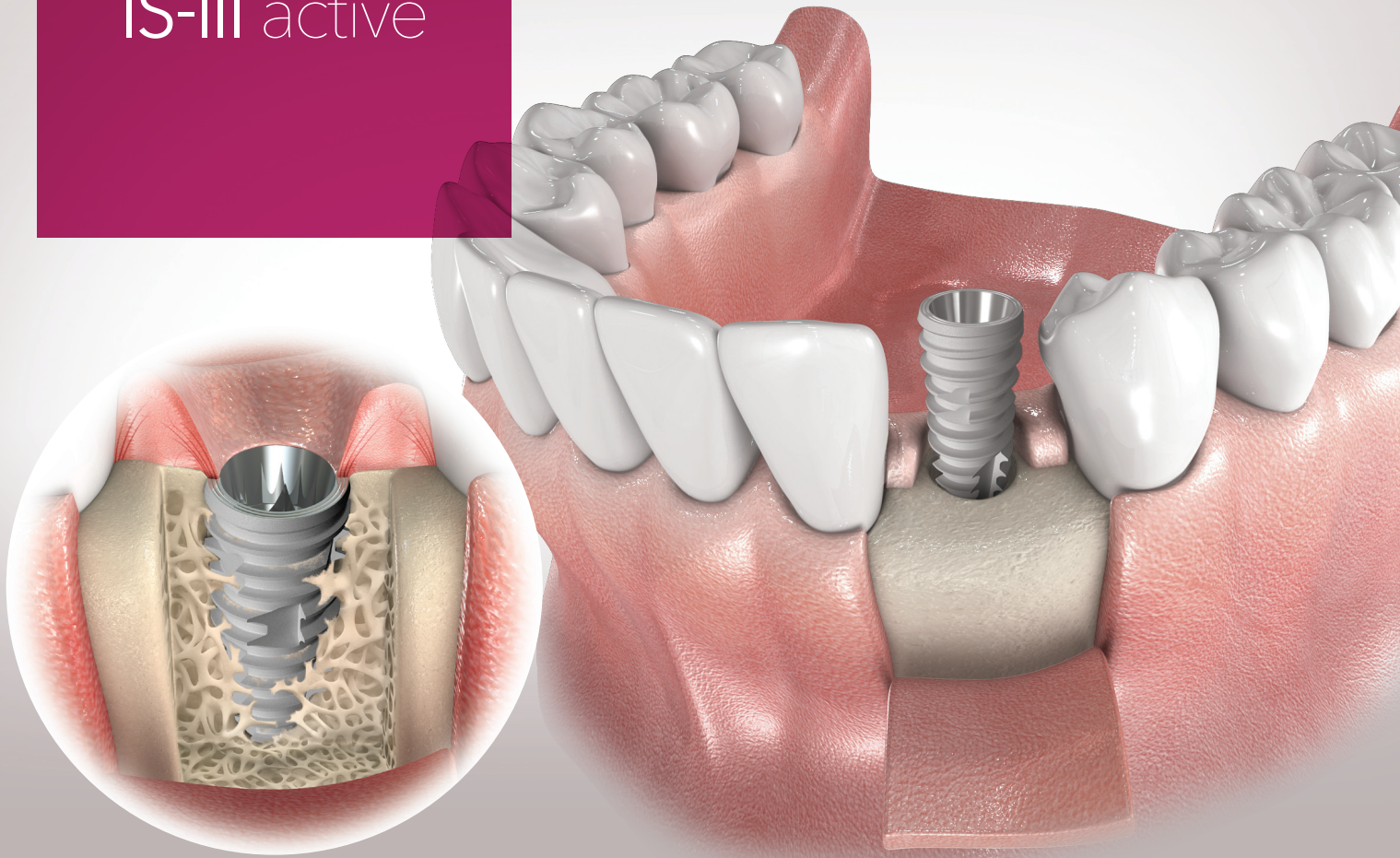


IS-III active



IS-III active implant is structured to maximize initial stability and facilitate faster osseointegration with its scientifically proven SLA surface and creative implant design.

Connection

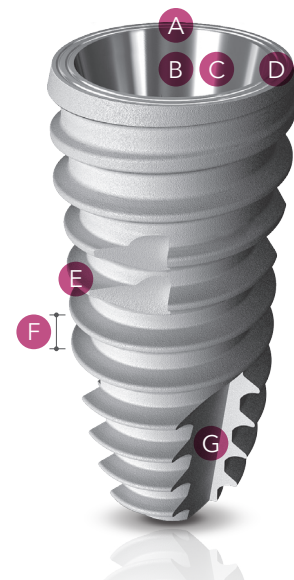
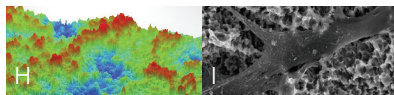
- A. Thicker Platform
- B. Anti-screw Loosening
- C. Abutment Compatibility

Design

- D. Platform Microgroove
- E. Magic Threads
- F. 0.9 Pitch
- G. Cutting Edge

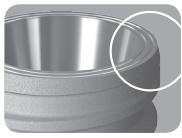
Surface

- H. S.L.A. Surface
- I. Cell Adhesion Ability



Microgroove & Connection

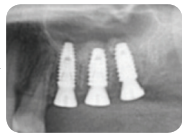
Minimize Bone Loss



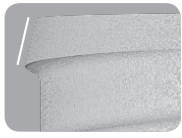
Platform microgroove



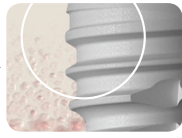
Enhanced soft tissue barrier seal



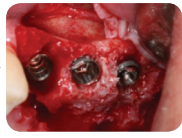
Minimize bone loss through soft tissue integration and optimized soft tissue seal



Open threaded bevel coronal

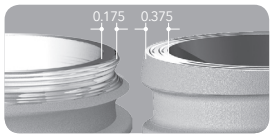


Minimize bone loss & maintain bone level

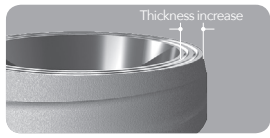


Successful osseointegration to bone level

Stronger Connection



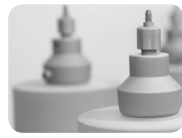
Maintains connection thickness over 3mm



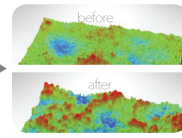
Increased strength of connection

S.L.A Surface

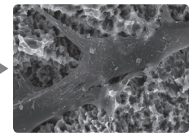
Facilitate Osseointegration



Improved processing technique of the S.L.A. Surface



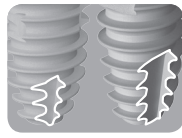
40 percent increase in surface area



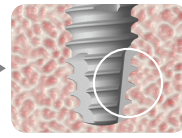
Reduced osseointegration time (50 percent increase in cell adhesion)

Wide Cutting Edge

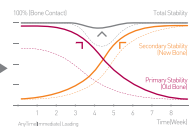
Ideal Initial Fixation



Doubled cutting edge surface



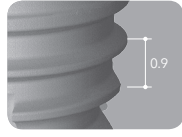
Improved Self-tapping ability while minimizing bone compression



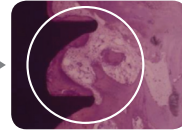
Maximized initial fixation (AnyTime Loading)

0.9 Pitch

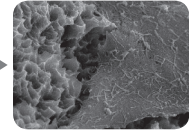
Minimize Bone Compression



Increase in thread pitch to 0.9



Minimal bone compression (Prevent bone necrosis)

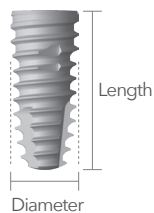


Provide optimal condition for osseointegration

IS-III active placement in the posterior mandible



IS-III active fixtures were placed in #45, 46, and 47 with ITV between 35 to 45Ncm. 3 months after surgery, a definitive 3-unit zirconia SCRPF were delivered.



IS-III active

Diameter (Ø)	Length (mm)
3.5	8.5 / 10.0 / 11.5 / 13.0
4.0 / 4.5 / 5.0 / 5.5 / 6.0	7.3 / 8.5 / 10.0 / 11.5 / 13.0