

FIXTURE REMOVER KIT



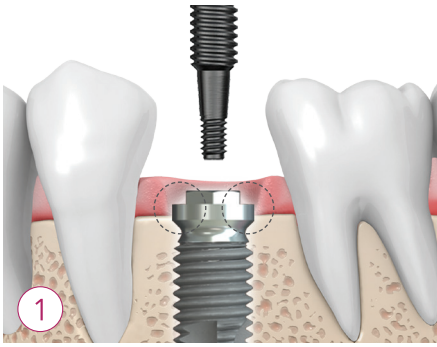
1/ FR kit

FR kit is a tool to remove failed implants while minimizing bone damage.

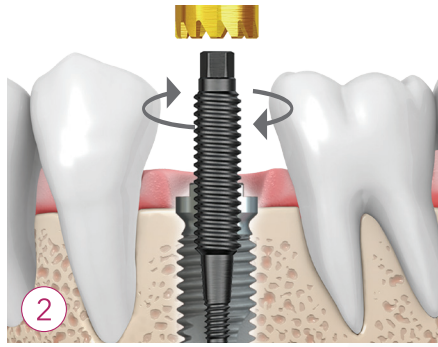
2/ Key Points of Neo FR kit

- Implant placement and GBR are capable immediately after fixture removal.
- Both osseointegrated implants and fractured implants are simply removed.
- No bone damage and dental trauma to patients.
- No need to use a trephine drill.
- Applicable to any type of implants with a screw hole.
- Capable to remove and replace the implant in ill-positioned implant placement case.

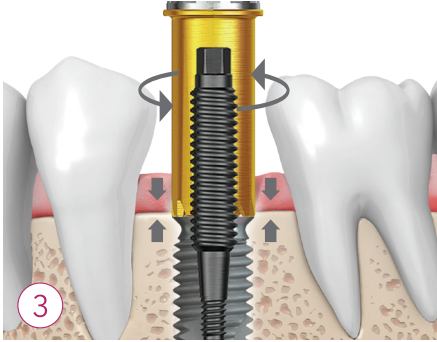
FR kit Technique Guide



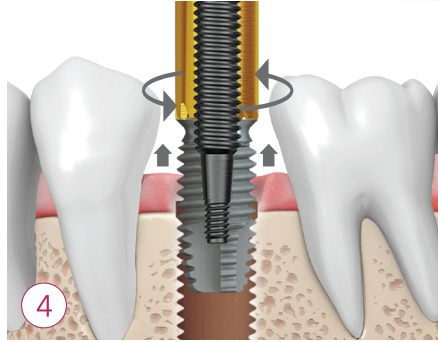
1 Failed implant



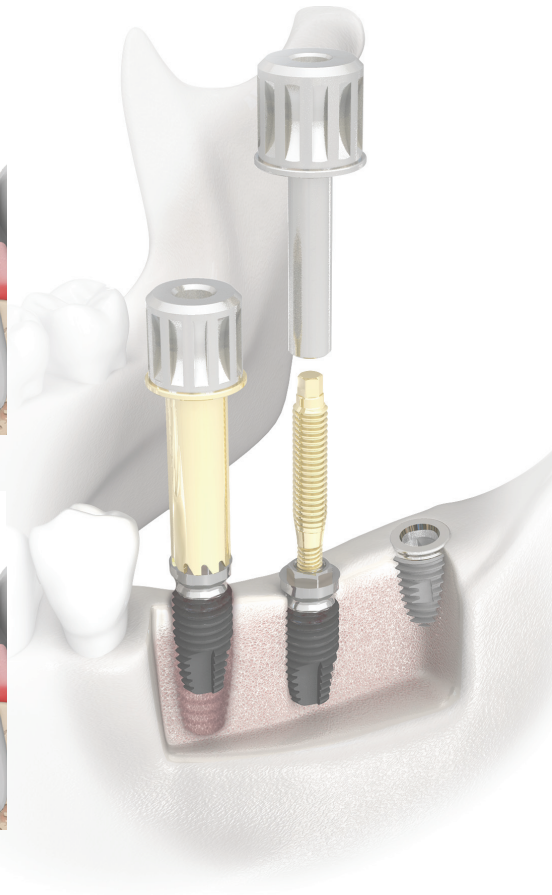
2 Right turn Close



3 Left turn Close



4 Implant removal



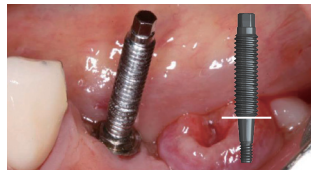
FR kit Clinical Case



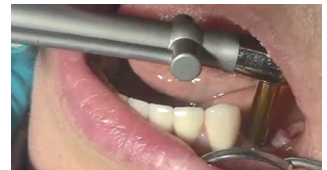
3mm bone loss was observed in #35.



Fixture Remover Screw was connected to the implant with 70Ncm. (less than 80Ncm is recommended)



Note: Fixture Remover Screw must be inserted up to the line to prevent screw fracture.



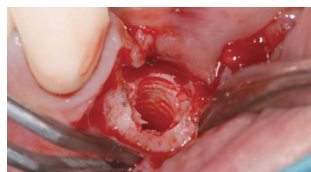
Fixture Remover was tightened counterclockwise onto the Fixture Remover Screw.



Using a torque wrench, the Fixture Remover was further tightened up to 300Ncm counter-torque with copious water.



Implant was unscrewed from the site without damaging the surrounding bone.



Favorable bony condition of threads was preserved.



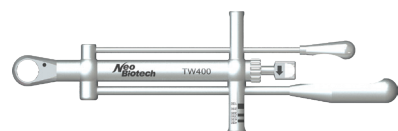
Fixture Remover



Screw Driver



Fixture Remover Screw



Torque Wrench